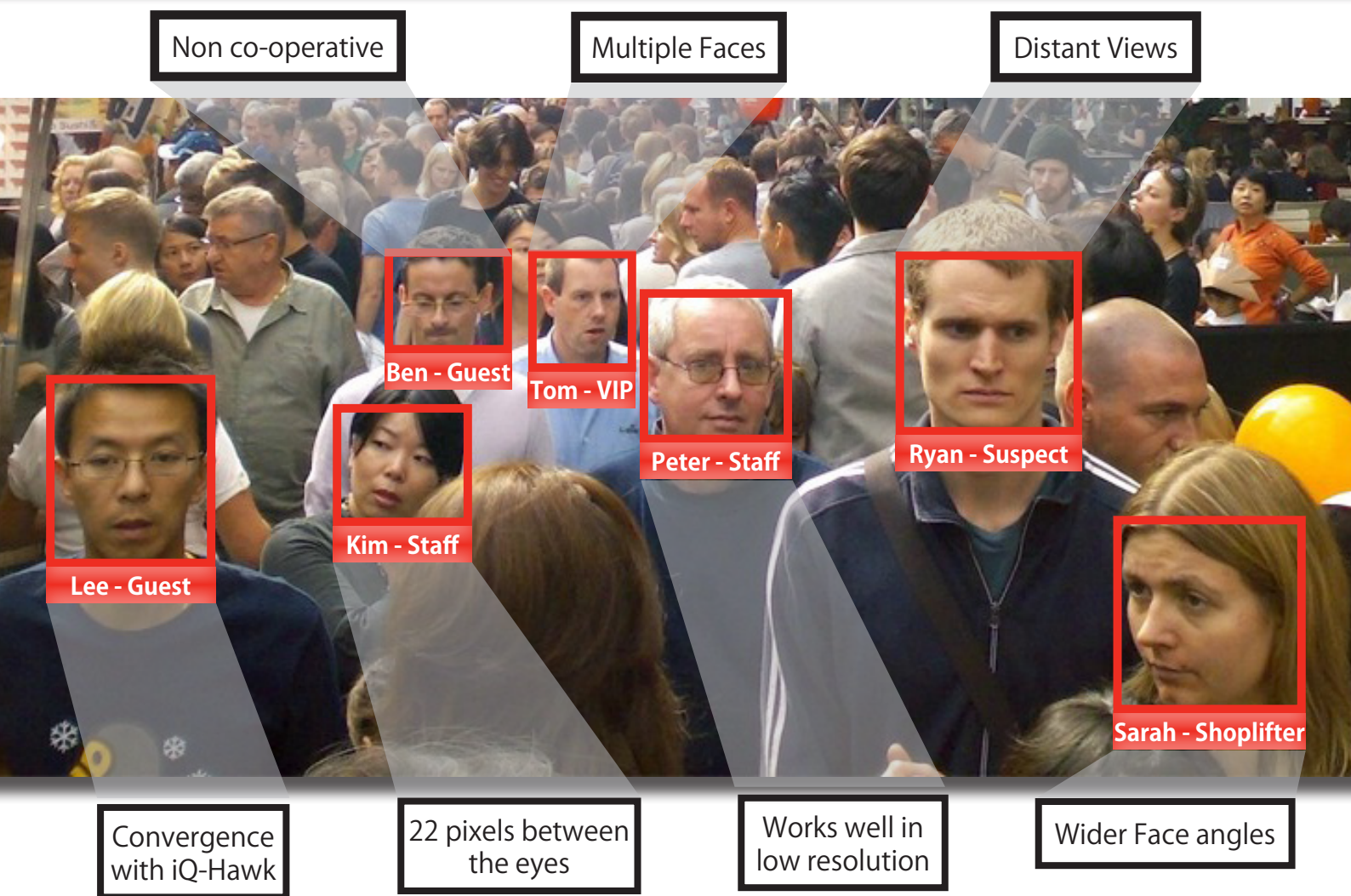


How smart is your surveillance system?

# Face Detection & Recognition in a Crowd (iQ-Face)



**iOmniscient's** iQ-Face is the world's first many-to-many Facial Recognition system that can operate in a crowded scene. iQ-Face is a family of various Face Detection (iQ-FaceD) and Face Recognition (iQ-FaceR) systems offered by iOmniscient. The iQ-FaceD can detect and record faces in busy environments for manual review. The more comprehensive iQ-FaceR incorporates iQ-FaceD and then automatically recognizes multiple faces which can be matched against a specified database or multiple databases.

iQ-Face excels in uncontrolled environments with variable lighting, continuous movement, low resolution and variable facial angles. It increases the probability of identification of wanted individuals in a crowd.

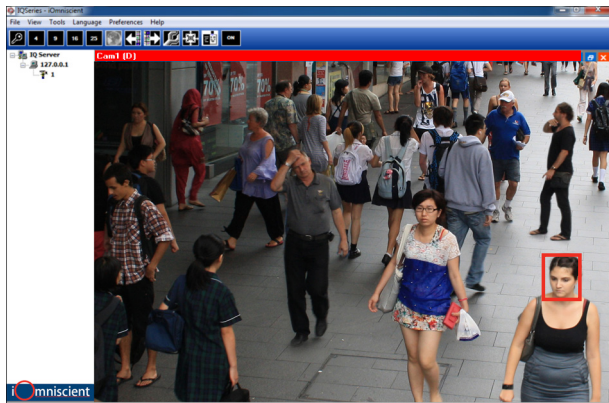
All iQ-Face systems are fully integrated with the iOmniscient range of Detection products and can operate with iQ-Hawk, which converges Detection and Identification systems in a single camera.

## What makes iQ-Face different?

- Operates with low resolution cameras at a distance (requires only 22 pixels between the eyes)
- Excels in uncontrolled environments with non-cooperative individuals
- Detects multiple faces in a crowd (iQ-FaceD), and simultaneously recognizes them by comparing them with one or more specified databases (iQ-FaceR)
- Recognizes faces from variable facial angles
- Fully integrated with iQ-Series detection products
- Can integrate with other recognition technologies. eg. iQ-Driver Match (optional extra)
- Automates Surveillance with iQ-Hawk (optional extra) & multiple Video Analytics

## See Through the Crowd





Operates at long distances and with low resolution

## Face Detection (iQ-FaceD) Applications

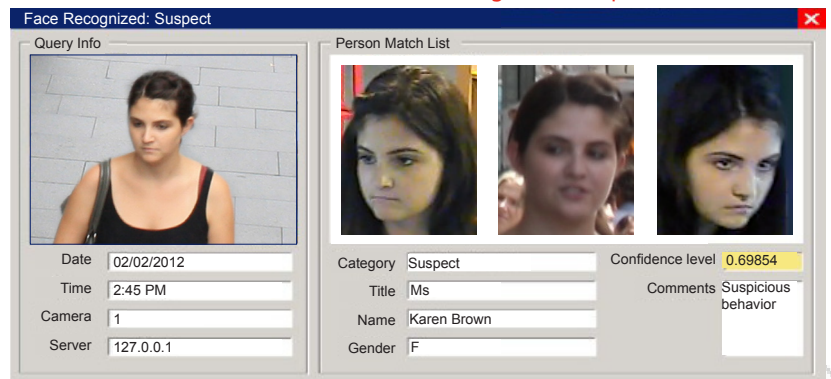
- iQ-FaceD (which can be purchased separately) can detect the presence of faces even in a crowded scene
- Optimizes storage (by storing faces only)
- Selects quality video (e.g. only with faces & frontal view)
- Records faces based on time/date
- Expedite search & forensic analysis using face images only (eg. speed up police investigation)
- Face Counting
- Tailgating

## Face Recognition (iQ-FaceR) Applications

- iQ-FaceR enables the system to present possible matches from faces stored in a database (or multiple databases)
- Queue Management to determine average, specific or individual waiting times
- Identifying potential threats in high security areas such as airports and banks
- Driver identification to verify vehicle ownership in secure car parks
- Improve customer service by identifying VIP guests in hotels or casinos
- Identifying blacklisted individuals such as shoplifters in a mall
- Tracking suspect footpath across non-overlapping cameras
- Advanced Access Control & Attendance System

Multiple Faces  
22 pixels between the eyes  
Wider Face angles  
Works well in low resolution  
Non co-operative  
Convergence with iQ-Hawk  
Distant Views

Uses low resolution (22 pixels between the eyes)  
Track and recognize multiple faces in a crowd



# iQ-Rating Chart

## Detection

	Limited	Average	Smart	Genius
Face Detection (one face, frontal view)	✓			
Face Detection (many faces, frontal view)	✓			
Face Detection (uncontrolled environment)		✓		

## Convergence

	Limited	Average	Smart	Genius
iQ-Hawk				✓
iQ-Driver Match				✓

## Recognition

	Limited	Average	Smart	Genius
<b>Face Recognition</b>				
Many to Many <sup>1</sup>				✓
Many to One <sup>1</sup>			✓	
One to Many (Access/Passport Control) <sup>2</sup>		✓		
One to One (Access/Passport Control) <sup>2</sup>	✓			

<sup>1</sup> Low Resolution requires 22 pixels, Uncontrolled Environment, Integrated with iQ-Hawk  
<sup>2</sup> Higher Resolution requires minimum 40 pixels, Controlled Environment

# See Through the Crowd